

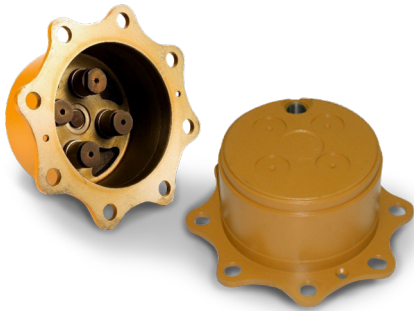


CGR GHINASSI®



FRONT AXLE PARTS

FRONT AXLE CARRIER DRIVE SHAFT SPINDLE



PART NO.	APPLICATION
1307027	416C, 416D, 420D, 424D, 426C, 428C, 428D, 430D, 432D, 436C, 438C, 438D, 442D
2097466	414E, 416D, 416E, 416F, 420D, 420E, 420F, 422E, 422F, 424D, 428D, 428E, 428F, 430D, 430E, 430F, 432D, 432E, 432F, 442D, 442E, 450E, 450F
2105924	414E, 416D, 416E, 416F, 420D, 420E, 420F, 422E, 422F, 424D, 428D, 428E, 428F, 430D, 430E, 430F, 432D, 432E, 432F, 442D, 442E, 450E, 450F
2105943	416D, 416E, 416F, 420D, 420E, 420F, 422E, 422F, 424D, 428D, 428E, 428F, 430D, 430E, 430F, 432D, 432E, 432F, 442D, 442E, 450E, 450F
2161601	414E, 416E, 416F, 420E, 420F, 422E, 422F, 428E, 428F, 430E, 430F, 432E, 432F, 434E, 434F, 442E, 444E, 444F
2161610	414E, 416E, 416F, 420E, 420F, 422E, 422F, 428E, 428F, 430E, 430F, 432E, 432F, 434E, 434F, 442E, 444E, 444F
2642766	428D, 432D, 436C, 438D, 442D
9R3527	416, 416B, 426, 426B, 428, 428B, 436B, 438B

PART NO.	APPLICATION
1303013	416C, 416D, 420D, 424D, 426C, 428C, 428D, 430D, 432D, 436C, 438C, 438D, 442D
1303014	416C, 416D, 420D, 424D, 426C, 428C, 428D, 430D, 432D, 436C, 438C, 438D, 442D
1388529	416C, 416D, 420D, 424D, 426C, 428C, 428D, 430D, 432D, 436C, 438C, 438D, 442D
1388532	416C, 416D, 420D, 424D, 426C, 428C, 428D, 430D, 432D, 436C, 438C, 438D, 442D
2105946	414E, 416D, 416E, 416F, 420D, 420E, 420F, 422E, 422F, 424D, 428D, 428E, 428F, 430D, 430E, 430F, 432D, 432E, 432F, 442D, 442E
2107305	414E, 416E, 416F, 420E, 420F, 422E, 422F, 428E, 428F, 430E, 430F, 432E, 432F, 442E

PART NO.	APPLICATION
1185837	416B, 416C, 416D, 420D, 424D, 426B, 426C, 428B, 428C, 428D, 430D, 432D, 436C, 438C, 438D, 442D
9R5220	416, 416B, 426, 426B, 428, 430D, 432D, 436C, 438D, 442D

All spare parts listed are interchangeable with genuine ones. All manufacturer's names, numbers, symbols and descriptions are used for reference purposes only. Image in this catalogue are purely indicative.