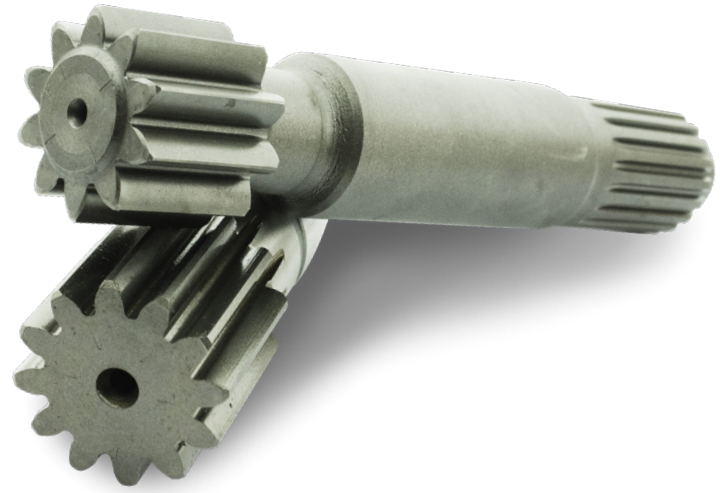


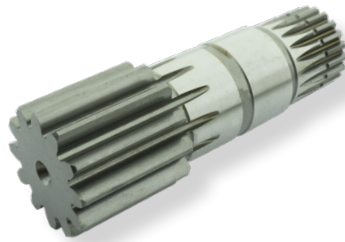


CGR GHINASSI®

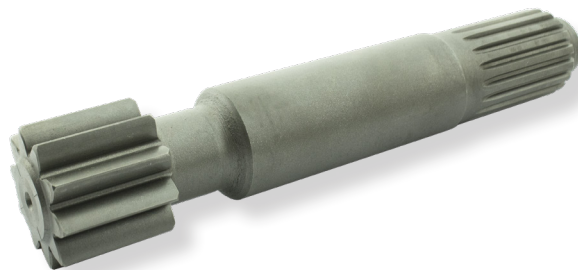
SWING MOTOR SHAFTS FOR MINI EXCAVATOR



SHAFT	MODEL	SERIAL NUMBER	MOTOR PUMP
1397340	301.5	3YW 1 - 3348	1445975
1397340	301.6	BDH 1 - 793	1445975
1397340	301.8	BFA 1 - 1772	1445975



SHAFT	MODEL	SERIAL NUMBER	MOTOR PUMP
2099666P	301.5	3YW 3348 UP	2099666
2099666P	301.6	BDH 793 UP	2099666
2099666P	301.8	BFA 1772 UP	2099666



The Swing Motor 144-5975 mounted on mini excavators and combined with the swing gear 216-8922 create the pinion replacement 139-7340. Instead the swing motor 209-9666 mounted on mini excavators and combined with the swing gear 216-8922 does not create the pinion replacement. For this reason we have studied the possibility to change the pinion and we have it codified as 209-9666-P. In this way we can give a better service to all our customer's.